

SOKOYO[®]



META
KY-D-SY Version 2022 1.0
LED SOLAR OUTDOOR STREET LIGHTS



JIANGSU SOKOYO SOLAR LIGHTING CO., LTD.

Tel: 0086 514 87914128

Website: www.sokoyosolar.com

Factory address: #3 district, Guoji Industrial park, North suburb, Yangzhou, Jiangsu Province, China

Sales Headquarter: Floor 4, Building 2, Guotai Building, No. 450, West Wenchang Road, Hanjiang District, Yangzhou city



KY-D-SY AC

High-quality craftsmanship, streamlined shape, beautiful appearance;
 The light source adopts modular design, easy to install and maintain;
 Portable push button switch design, one key switch is simple and convenient, no tools required;
 Light-controlled sensing technology to achieve intelligent energy saving;
 The bat-wing light distribution design provides uniform light distribution.

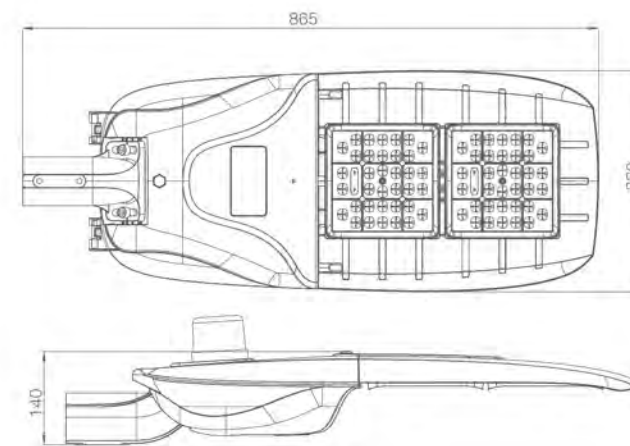
Appearance Patent Number:202230133221.1



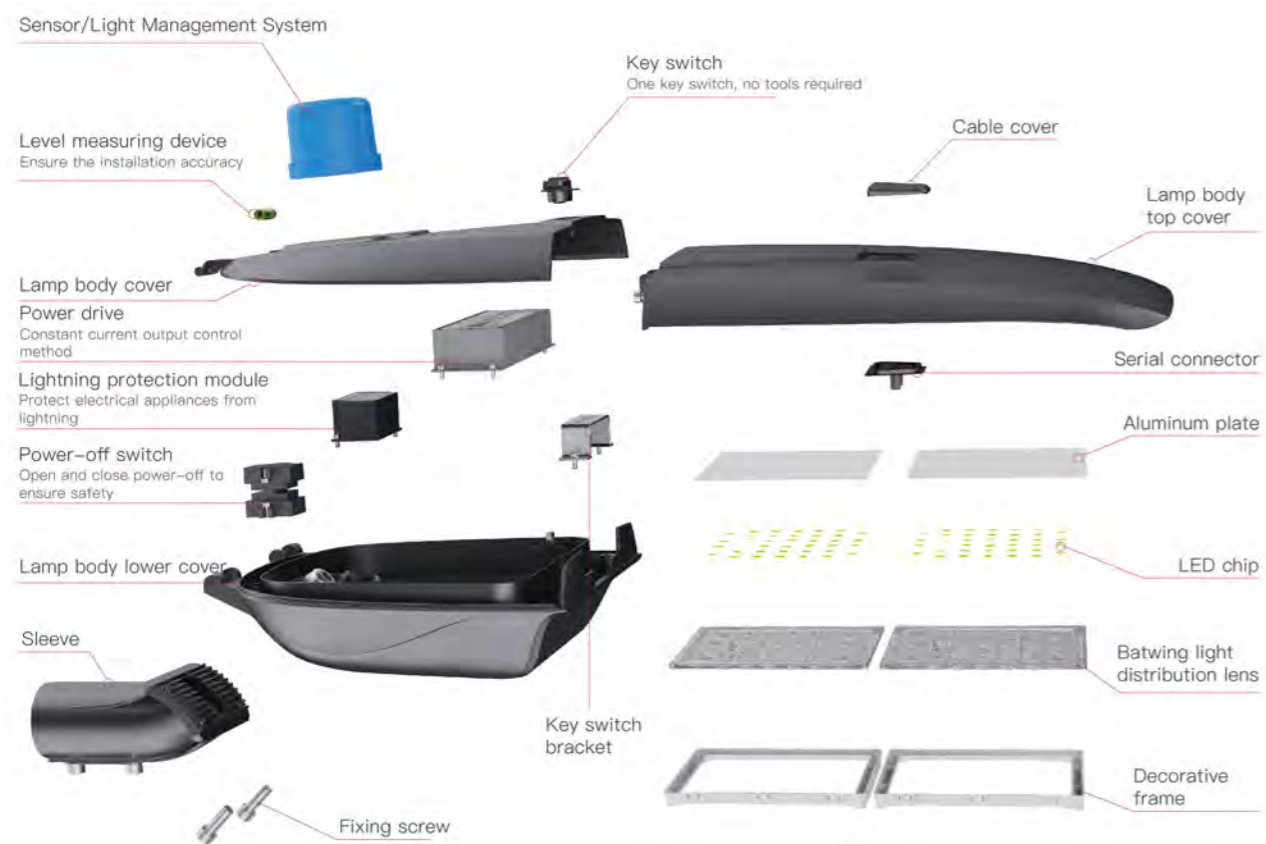
TECHNICAL PARAMETER

Product Models	KY-D-SY-001	KY-D-SY-002	KY-D-SY-003
Rated Power	60W	100W	120W
System Voltage	AC100-305V	AC100-305V	AC100-305V
Type of Light Source	3030/5050/7070	3030/5050/7070	3030/5050/7070
Light Distribution Type	Bat-Wing light distribution(150°x65°)	Bat-Wing light distribution(150°x65°)	Bat-Wing light distribution(150°x65°)
Light Efficiency	≥150LM/W	≥150LM/W	≥150LM/W
Color Temperature	3000K/4000K/5000K/5700K	3000K/4000K/5000K/5700K	3000K/4000K/5000K/5700K
CRI	≥Ra70	≥Ra70	≥Ra70
IP Grade	IP65	IP65	IP65
IK Grade	IK08	IK08	IK08
Working Temperature	-40℃~+60℃	-40℃~+60℃	-40℃~+60℃
Working Humidity	10%-90%	10%-90%	10%-90%
LED Lifespan	>50000H	>50000H	>50000H
Controller	Meanwell	Meanwell	Meanwell
Mounting Diameter	865 x 330 x 140 mm	865 x 330 x 140 mm	865 x 330 x 140 mm
Lamp Dimension	925 x 390 x 196 mm	925 x 390 x 196 mm	925 x 390 x 196 mm
Suggested Mounting Height	6.75kg	6.75kg	6.75kg
Lamp Weight	φ60mm	φ60mm	φ60mm
Package Dimension	6-8m	8-10m	10-12m

LAMP DIMENSION



STRUCTURE DISPLAY



- Large diameter opening and closing split design

Detachable shaft design, the lamp cover can be opened, closed and disassembled with a large diameter, which is convenient for installation and maintenance without restriction.

- Double sleeve installation

The lamps are installed horizontally and vertically. All lights can be selected according to different lighting environments to meet different lighting needs.



- One-button switch design

It can be disassembled by hand, tool-free operation, easy to repair, maintain, and easy to operate.



Power driver



Constant current output control mode, dimmable light shutdown, with lightning protection, overvoltage protection, short circuit protection and overtemperature protection, to ensure high product reliability

Lightning protection module



Effectively protect electrical equipment from the damage caused by lightning overvoltage, artificial overvoltage, and power frequency transient overvoltage.

Power-off switch design

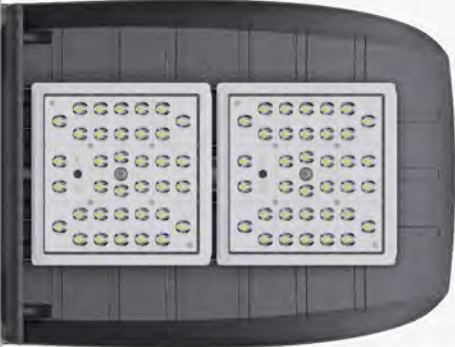


Maintenance personnel can repair or replace the luminaire without cutting off the power supply, safe and convenient, no potential safety hazard.

DETAILS SHOW

Batwing Lens

The latest patented light source technology, through the special structure of the lens, realizes the light emitted by the light source to form a bat wing shape, achieves the best uniform illumination, and improves the lighting effect.



Level design · Precise installation
Add a level design to ensure installation accuracy and ensure the accuracy of the horizontal direction.



Tick mark
Precise scale design, adjustable and locked within 15° (from -10° to +10°), precise fixed angle to ensure installation accuracy.



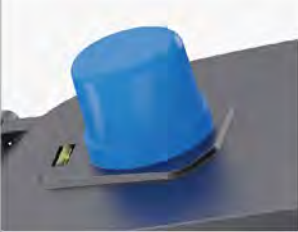
Respirator design · Waterproof and breathable

While waterproof and breathable, it can balance pressure, reduce fogging, frost, and eliminate moisture.



High pressure cast aluminum lamp body

It is formed by ADC12 high pressure die-casting aluminum, which is impact-resistant and corrosion-resistant. The surface is electrostatically sprayed after shot blasting.



Sensor/Light Management System

This position of the lamps can be equipped with various sensors/light management systems. It can realize photoelectric timing, dimming, remote management, fault alarm and other functions.



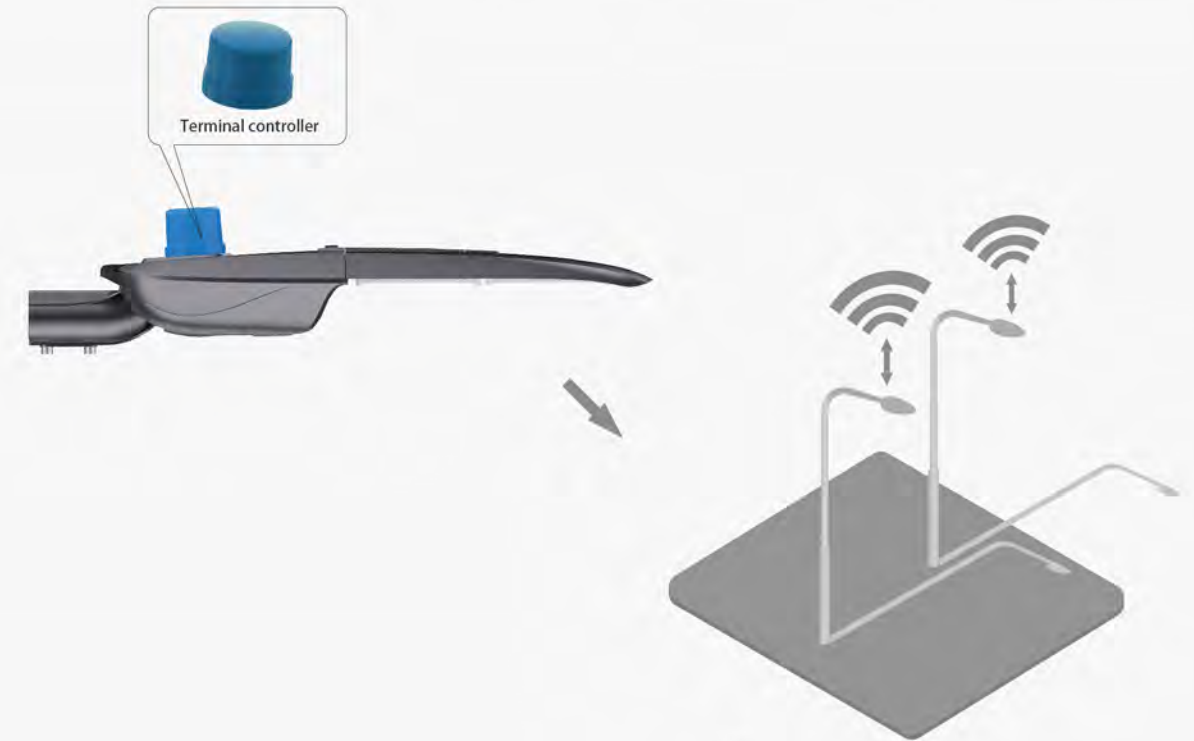
• IK09



• IP65

INTELLIGENT LIGHTING

The lamps can be equipped with smart components and configured as smart street lamps, which integrate hardware functions such as transportation, environmental monitoring, energy management, urban management, and can be widely distributed in every corner of the city to help the construction of smart cities.

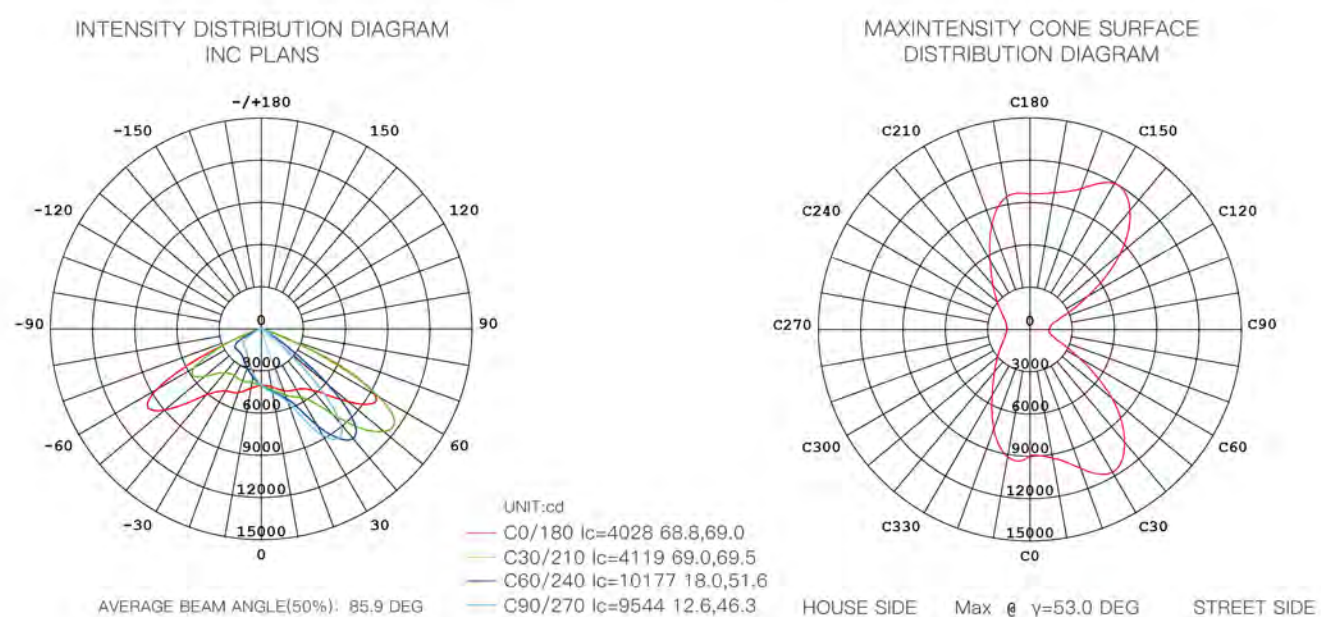


- Transportation
- Environmental monitoring
- Traffic management
- City management

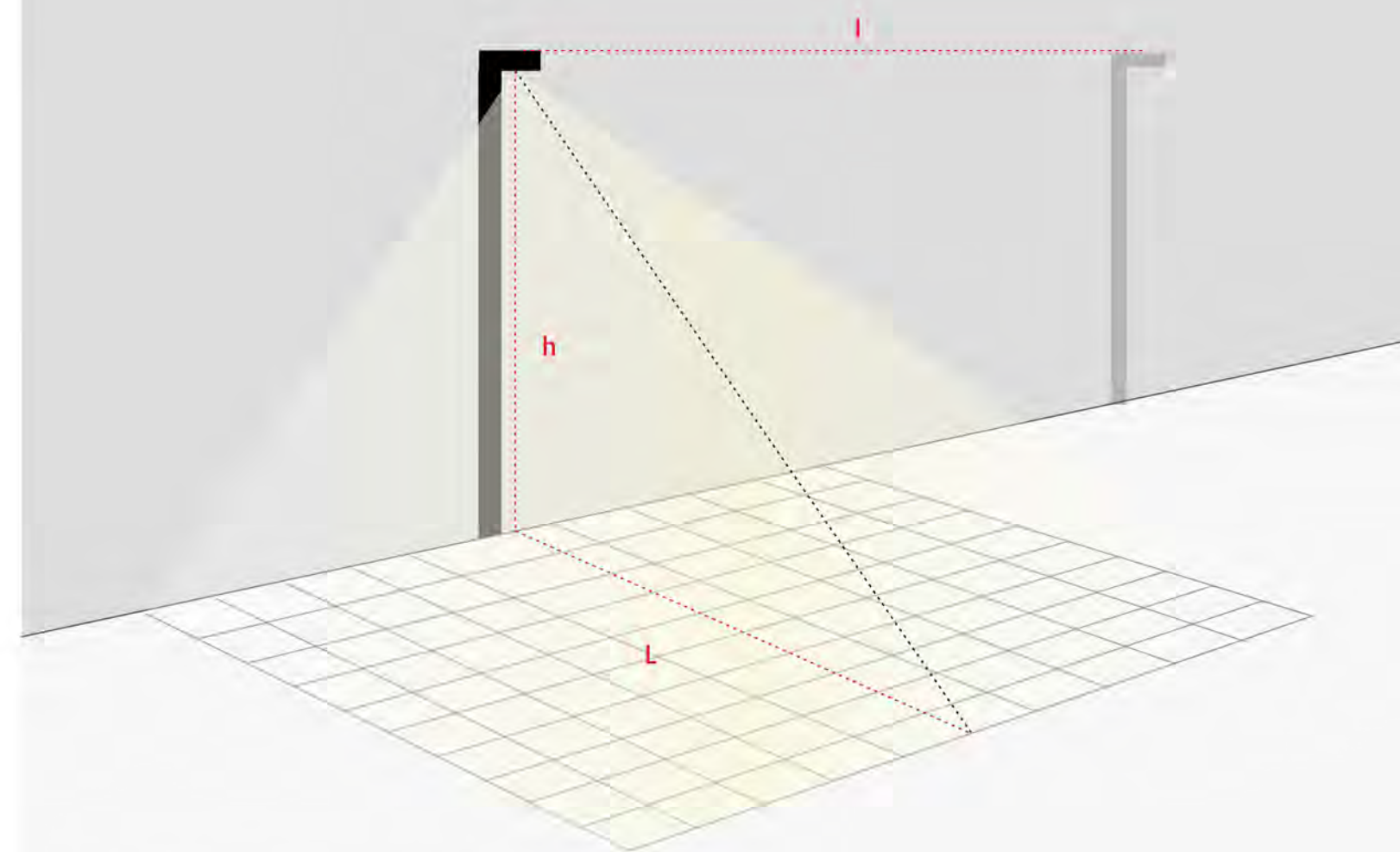
LED PARAMETER

Street Light Intensity Test Report(120W Parameter)

DATA OF LAMP		PHOTOMETRIC DATA			
MODEL	KY-D-SY-003	Eff:168.48 lm/W			
NOMINAL POWER (W)	120	lmax (cd)	11973	η street up (%)	0.0
RATED VOLTAGE (V)	48	LOR (%)	100.0	η street down (%)	62.3
NOMINAL FLUX (lm)	10108.8	TOTAL FLUX (lm)	20218	η house up (%)	0.0
LAMPS INSIDE	2	MAXIMUM θ (C, γ)	150°, 53.0°	η house down (%)	37.7
TSET VOLTAGE (V)	46.6	η up (%)	0.0	76 FLASHAREA (m ²)	0.00100
		η down (%)	100.0	STL	18.747



LIGHT GUIDE



D=distance to height ratio (L/h)
 h=height of light pole
 l=pole distance
 L=width of lighting area

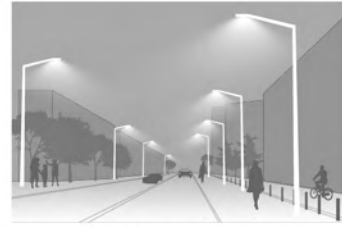
APPLICATION SCENARIOS



Streets, trails, bike paths



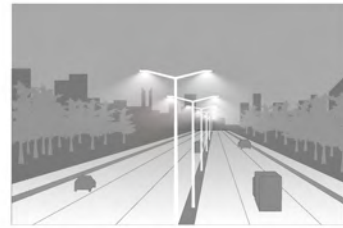
Residential street



Commercial street, office complex



Parks, squares, amusement parks



Rural/urban road



Highways and Ring Roads

LIGHT POLE ACCESSORIES

The following is only a schematic diagram of the installation. The height and installation method of the light pole can be adjusted appropriately according to the needs of the site.



